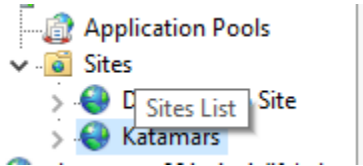


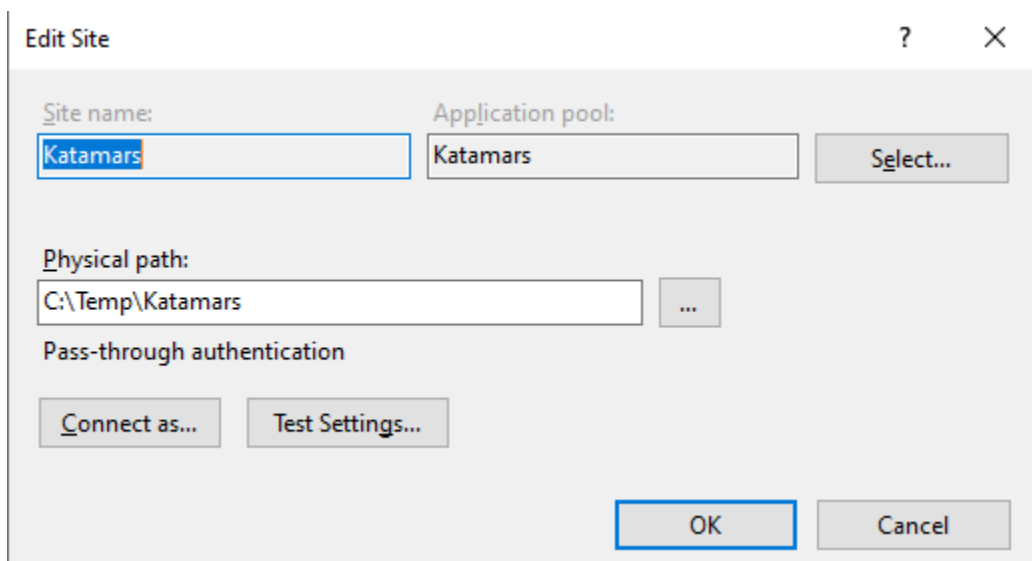
Katamars IIS Setup Help

1 Create an Empty Web Site for example Katamars

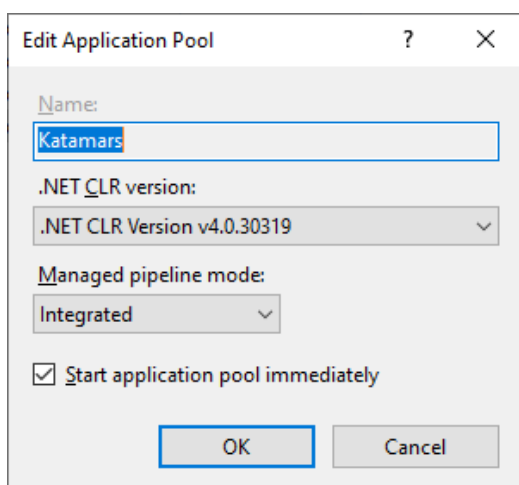


2- Make the app pool as the following:

a) To see the app pool user click on Basic settings



In my case the apppool account is called katamars, make sure the settings look like



3- Import the Zip File

The screenshot shows the IIS Manager interface. On the left, the 'Connections' pane shows the tree structure: Start Page, DESKTOP-C1QCARM (DESKT), Application Pools, Sites, Default Web Site, Katam, and abarsoum-00. The 'Application Pools' folder is selected. The main pane displays the 'Application Pools' page with a table of application pools. A context menu is open over the table, with 'Deploy' selected, which has opened a sub-menu where 'Import Application...' is highlighted.


Name	Status	.NET CLR V...	Managed Pipel...	Identity
	Started	v2.0	Integrated	Applicati
	Started	v2.0	Classic	Applicati
	Started	v4.0	Integrated	Applicati
	Started	v4.0	Classic	Applicati
	Started	v2.0	Classic	Applicati
	Started	v4.0	Integrated	Applicati
	Started	No Manag...	Integrated	Applicati

Select Package and click next

Click next

Leave application path empty

Import Application Package

 **Enter Application Package Information**

Enter information that is required to install this package:

Application Path
Full site path where you want to install your application (for example, Default Web Site/Application).
Katamars/

AvaBishoy.Katamars.Data.BibleDbContext-Web.config Connection String

AvaBishoy.Katamars.Data.DailyBreadDbContext-Web.config Connection String

AvaBishoy.Katamars.Data.DictionariesDbContext-Web.config Connection String

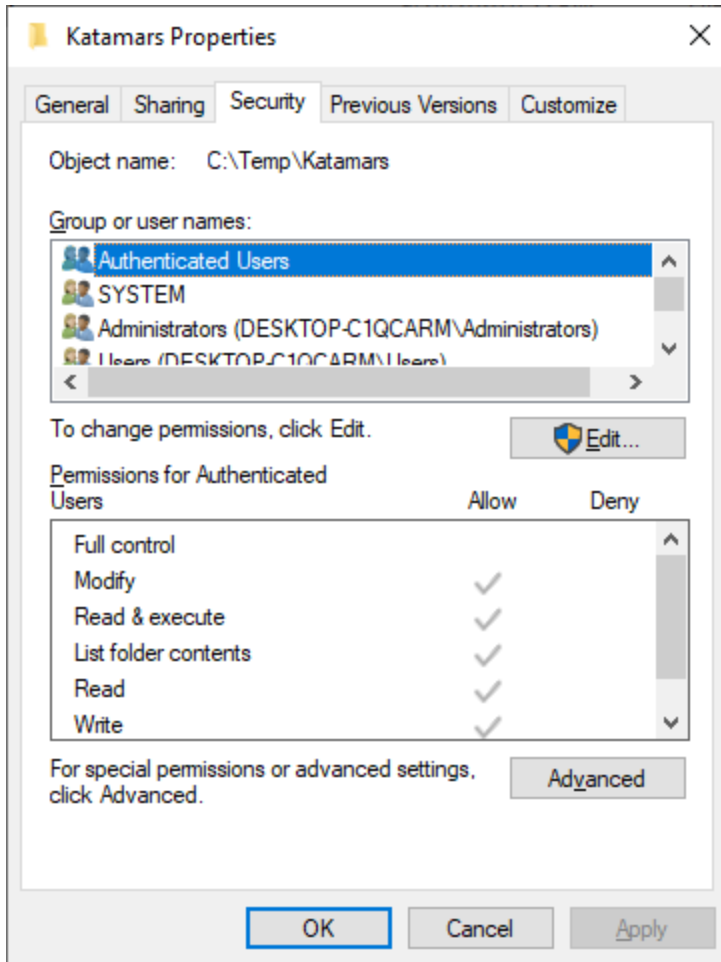
AvaBishoy.Katamars.Data.Explain1DbContext-Web.config Connection String

Click next

Make sure the physical path has enough permission to be accessed by apppool,

You can go to security and add it as **IIS AppPool\Katamars** while katamars is the apppool name

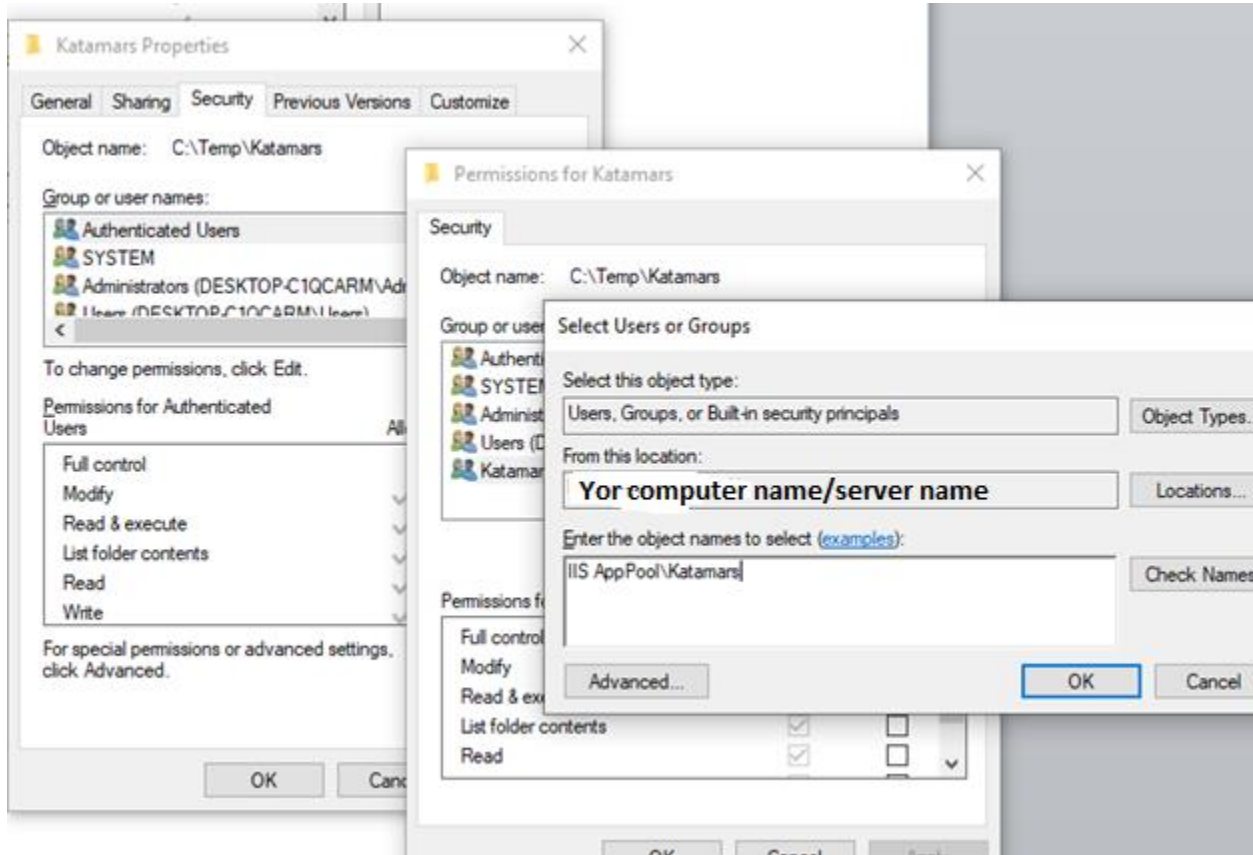
Folder Security where you put the physical folder for katamars for example C:\Temp\Katamars



You need to add the app pool and give it read + write

Choose

- Location to be the server or computer not the domain
- Type IIS AppPool\Katamars



After everything, run cmd as administrator

And type iisreset